

MIRAMAR[®]

EXTREMELY COMFORTABLE FOR THE LONG
HAUL AND ALL THE AMENITIES YOU NEED
FOR TURNING A WEEK INTO A LONGER
ESCAPE. THE MIRAMAR[®] FROM
THOR MOTOR COACH.



Made to fit.



MIRAMAR[®]

The reign of the work week is over, now it's your time. When everyone comes home late together and staying up after bedtime means something different than overtime. Be on your own schedule in a 2020 Miramar[®] from Thor Motor Coach.



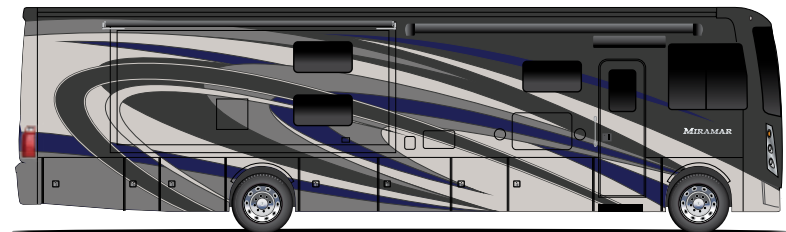
EXTERIOR OPTIONS



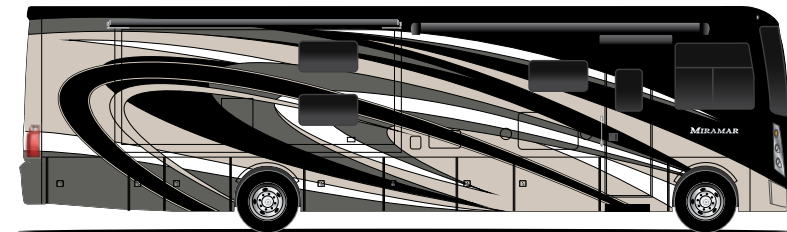
COASTAL CRANBERRY **HD-MAX**



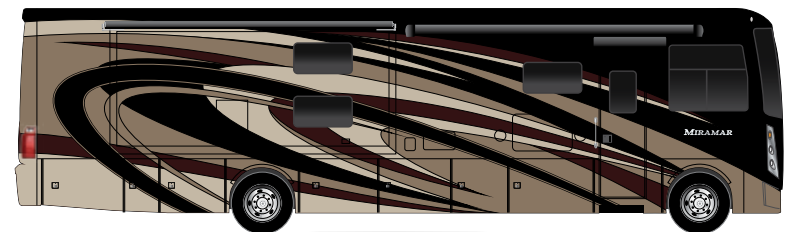
OCEAN FRONT **HD-MAX**



BLUE NOTE FULL-BODY PAINT



CRYSTAL SPRINGS FULL-BODY PAINT



LACQUER RED FULL-BODY PAINT



TRITON® V10 ENGINE

The 6.8L V10 engine has a proven track record of durability and low-hassle maintenance. Extremely smooth running with a commanding 320-horsepower and 460 lb.-ft. of torque.

POWER 4-WHEEL DISC ANTI-LOCK BRAKES

Maintains brake balance in heavy use and varying road conditions. Reduces wheel lock up and helps maintain superior steering control.

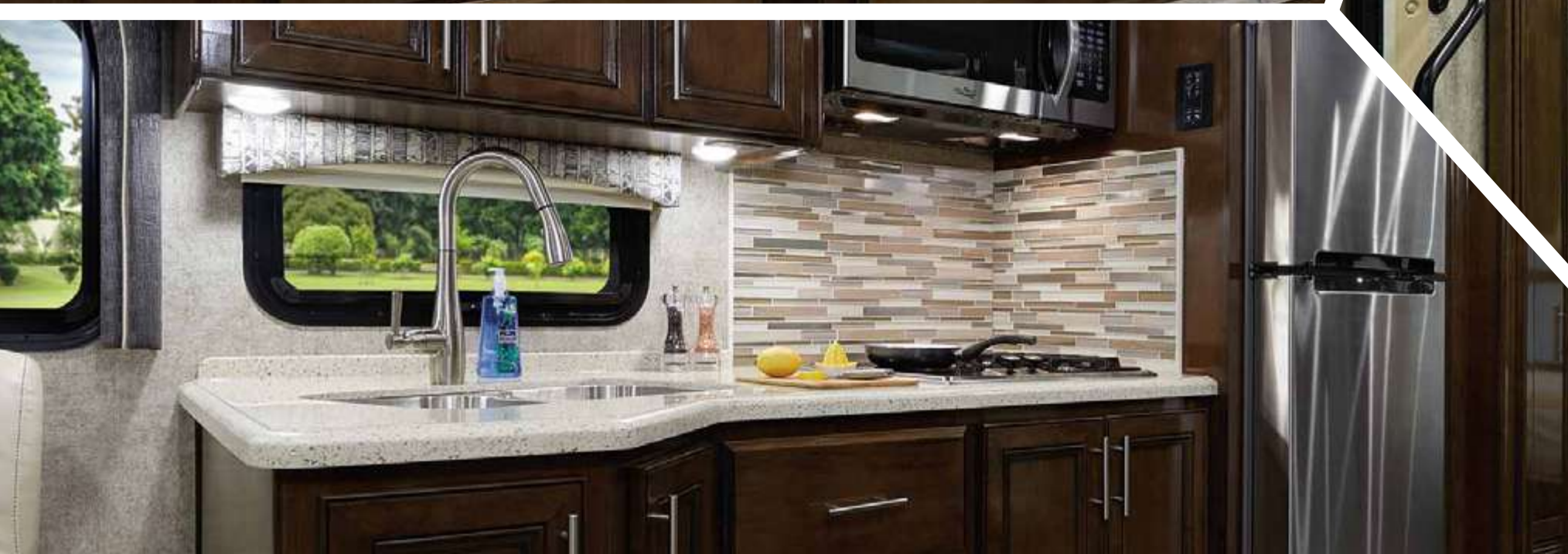
TORQSHIFT™ 6-SPEED AUTOMATIC TRANSMISSION

Provides crisp, firm and quick shifting without sacrificing driver comfort.

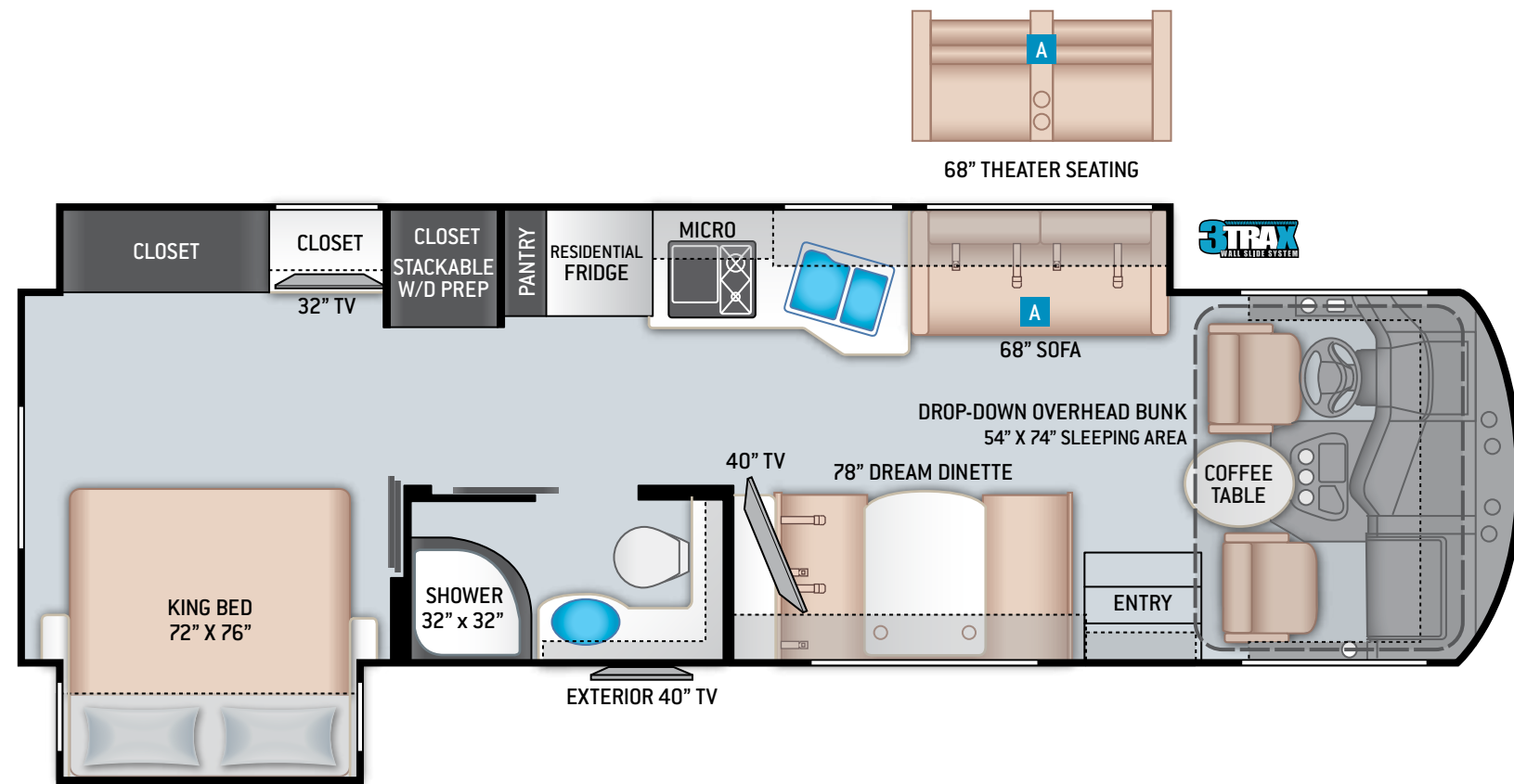
LIMITED WARRANTY

The Ford® Motorhome Chassis has a Limited Warranty for 3 years or 36,000 miles and a Powertrain Limited Warranty for 5 years or 60,000 miles, whichever comes first.





FLOOR PLANS



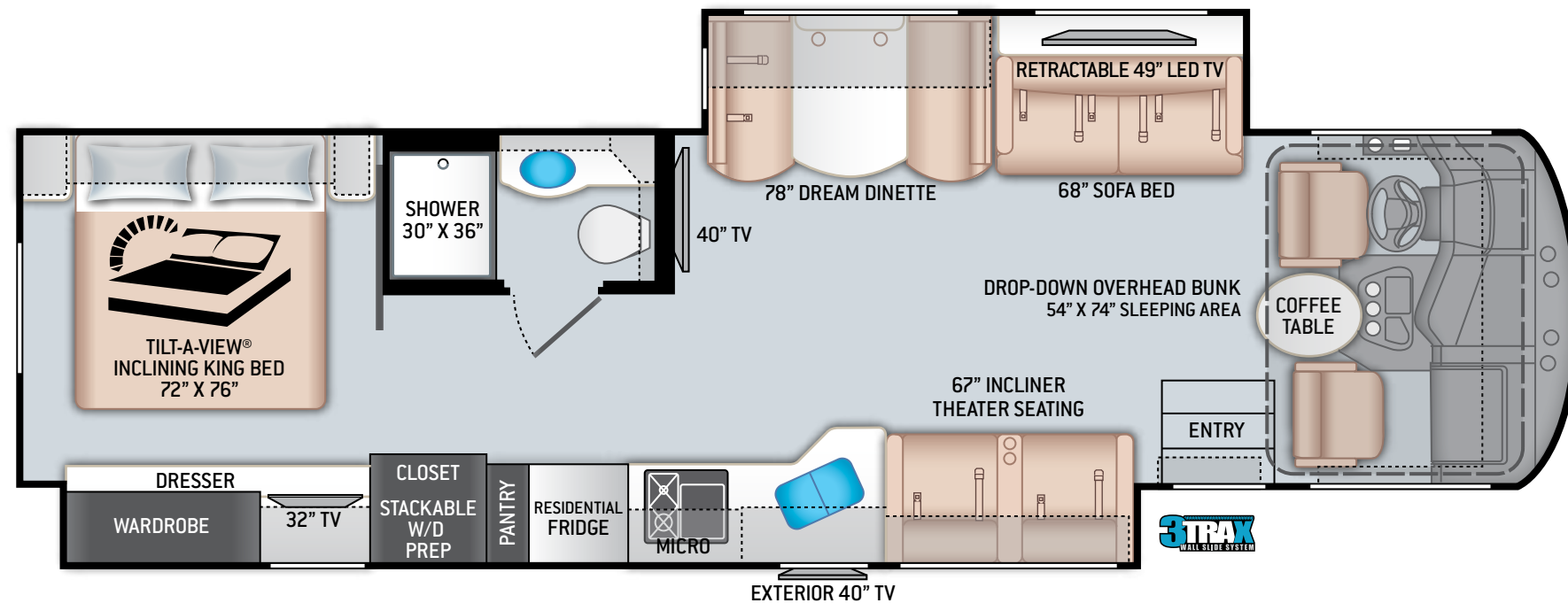
32.2

SPECIFICATIONS

32.2

CHASSIS	Ford
GROSS VEHICLE (GVWR)	22,000
GROSS COMBINED (GCWR)	26,000
WHEEL BASE	228"
EXTERIOR LENGTH (W/O LADDER)	34'-1"
EXTERIOR HEIGHT (W/AC)	12'-11"
EXTERIOR WIDTH (W/O MIRRORS)	101"
INTERIOR HEIGHT (LIVING AREA)	84"
AWNING SIZE	20'
FUEL (GAL)	80
LPG (LBS)	105
FRESH/WASTE/GRAY WATER (GAL)	100 / 40 / 40
WATER HEATER (GAL)	Tankless
FURNACE (BTUS)	35,000
EXTERIOR STORAGE CAPACITY (CU. FT.)	147

FLOOR PLANS

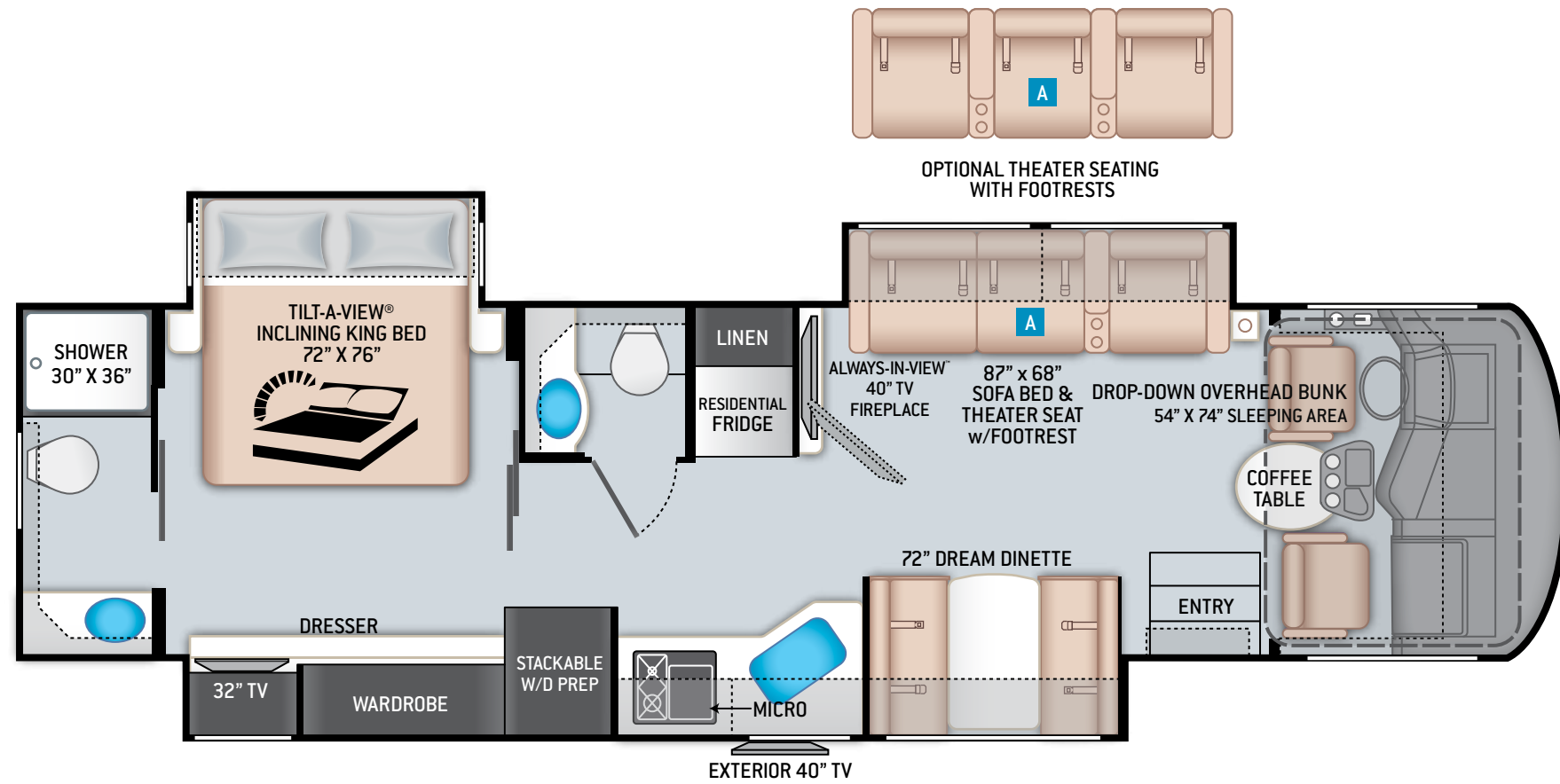


35.2

SPECIFICATIONS

	35.2
CHASSIS	Ford
GROSS VEHICLE (GVWR)	22,000
GROSS COMBINED (GCWR)	26,000
WHEEL BASE	242"
EXTERIOR LENGTH (W/O LADDER)	37'
EXTERIOR HEIGHT (W/AC)	12'-11"
EXTERIOR WIDTH (W/O MIRRORS)	101"
INTERIOR HEIGHT (LIVING AREA)	84"
AWNING SIZE	20'
FUEL (GAL)	80
LPG (LBS)	105
FRESH/WASTE/GRAY WATER (GAL)	100 / 40 / 40F-30R
WATER HEATER (GAL)	Tankless
FURNACE (BTUS)	35,000
EXTERIOR STORAGE CAPACITY (CU. FT.)	180

FLOOR PLANS

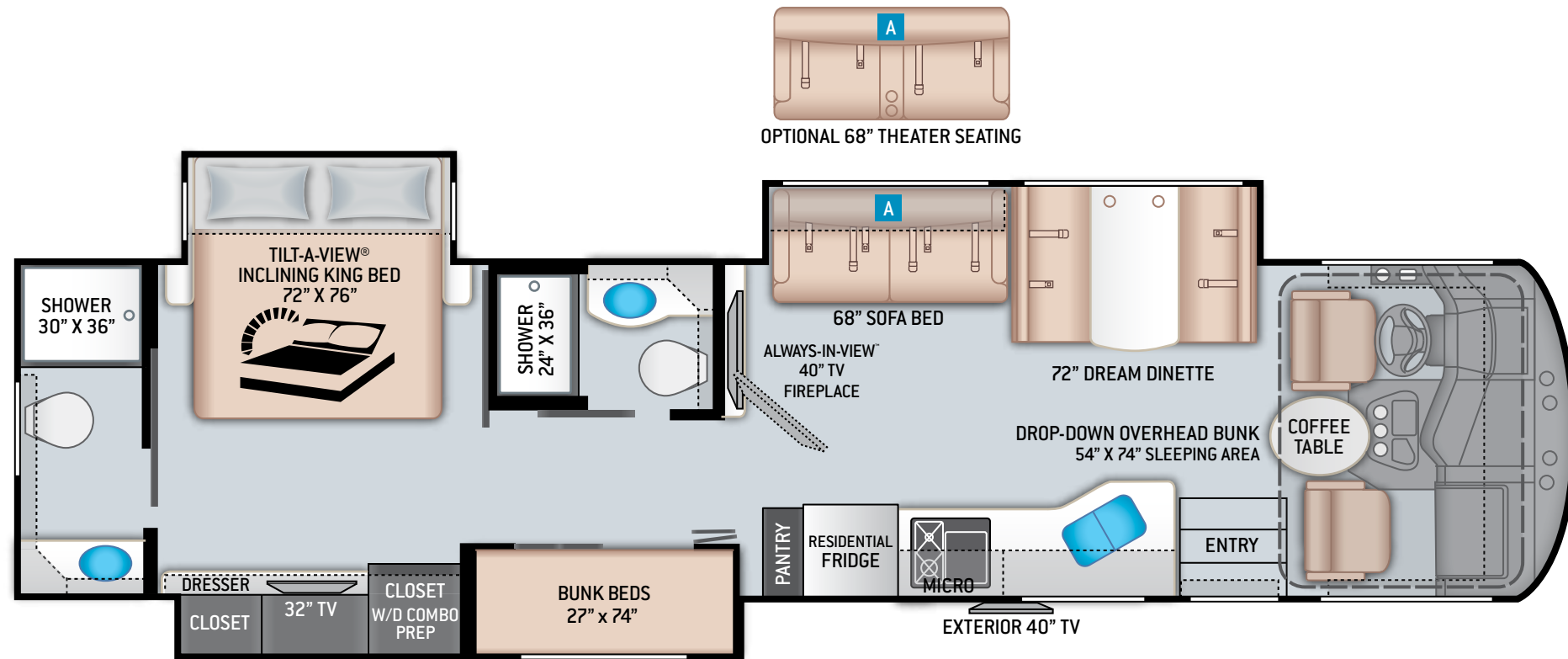


35.4

SPECIFICATIONS

	35.4
CHASSIS	Ford
GROSS VEHICLE (GVWR)	22,000
GROSS COMBINED (GCWR)	26,000
WHEEL BASE	242"
EXTERIOR LENGTH (W/O LADDER)	37'
EXTERIOR HEIGHT (W/AC)	12'-11"
EXTERIOR WIDTH (W/O MIRRORS)	101"
INTERIOR HEIGHT (LIVING AREA)	84"
AWNING SIZE	18'
FUEL (GAL)	80
LPG (LBS)	105
FRESH/WASTE/GRAY WATER (GAL)	100 / 40F-40R / 40F-40R
WATER HEATER (GAL)	Tankless
FURNACE (BTUS)	35,000
EXTERIOR STORAGE CAPACITY (CU. FT.)	158

FLOOR PLANS



37.1

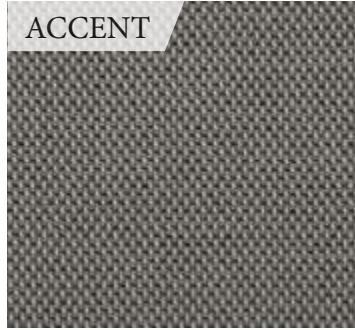
SPECIFICATIONS

	37.1
CHASSIS	Ford
GROSS VEHICLE (GVWR)	24,000
GROSS COMBINED (GCWR)	30,000
WHEEL BASE	262"
EXTERIOR LENGTH (W/O LADDER)	38'-11"
EXTERIOR HEIGHT (W/AC)	12'-11"
EXTERIOR WIDTH (W/O MIRRORS)	101"
INTERIOR HEIGHT (LIVING AREA)	84"
AWNING SIZE	15'
FUEL (GAL)	80
LPG (LBS)	105
FRESH/WASTE/GRAY WATER (GAL)	100 / 40F-40R / 40F-40R
WATER HEATER (GAL)	Tankless
FURNACE (BTUS)	35,000
EXTERIOR STORAGE CAPACITY (CU. FT.)	216

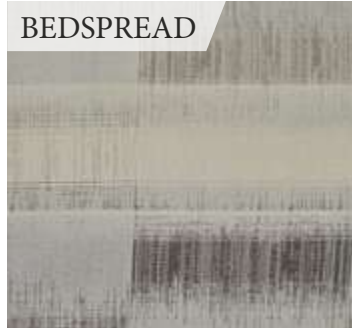
INTERIOR OPTIONS



VALANCE & PILLOW



ACCENT



BEDSPREAD

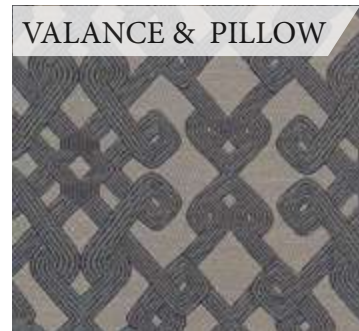


BED ACCENT



FURNITURE

BLACK MAGIC



VALANCE & PILLOW



ACCENT



BEDSPREAD



BED ACCENT



FURNITURE

CRYSTAL CLIFFS



VALANCE & PILLOW



ACCENT



BEDSPREAD



BED ACCENT



FURNITURE

SKYBRIDGE



AMHERST



PACIFIC



KITCHEN COUNTERTOP



BED & BATH COUNTERTOP



FLOORING





SPECIAL FEATURES



Winegard® Connect™ 2.0
4G LTE Router and WiFi Extender



100-gal Fresh Water Tank



Power Drop-Down Hide-Away
Overhead Bunk with Cotton Cloud™
Mattress & Bunk Ladder



Exterior LP Connection



10.1" In-Dash Touchscreen
Media Center with App
Control & Navigation



Solar Prep -
Includes Solar Controller



Combination Induction and
Gas Cooktop



Pet-Link™ Multi-Purpose
Tie-Down



Multiplex Wiring Control
System with 7" Touchscreen



Tankless Water Heater



1800-watt Inverter



SiriusXM® Radio



FEATURED HIGHLIGHTS

CONSTRUCTION & EXTERIOR

- ◆ Ford® F-53 Chassis - 6.8L Triton® V10 Engine, 320HP, 460 lb.-ft. Torque - TorqShift® 6-Speed Automatic with Overdrive Transmission
- ◆ Premium One-Piece TPO Roof
- ◆ One-Piece Fiberglass Front & Rear Caps
- ◆ HD-MAX® Exterior with Partial Paint & Graphics Package
- ◆ Automatic Leveling Jacks with Touchpad Controls
- ◆ Power Patio Awning with Integrated LED Lighting
- ◆ Power Entry Door Awning (35.2 & 35.4)
- ◆ Slideout Room Topper Awning(s)
- ◆ 3TRAX® Wall Slide System (32.2 & 35.2)
- ◆ Basement Pass-Through Storage
- ◆ Rotocast Storage Compartments
- ◆ Side-Hinged Aluminum Compartment Doors
- ◆ Pet-Link™ Multi-Purpose Tie-Down
- ◆ Roof Ladder
- ◆ Electric Entry Steps
- ◆ Frameless Windows
- ◆ 8,000-lb. Trailer Hitch with 7-pin Round Connector

CONSTRUCTION & EXTERIOR OPTIONS

- ◆ Full-Body Paint with Gel Coated Sidewalls with Invisible Front Mask Paint Protection
- ◆ Frameless Dual Pane Windows

AUTOMOTIVE & COCKPIT

- ◆ 10.1" Touchscreen Dash Radio with Bluetooth®, Axerra™ Navigation & SiriusXM® Radio
- ◆ Back-Up Monitor
- ◆ Heated/Remote Exterior Mirrors with Integrated Side View Cameras
- ◆ Cruise Control
- ◆ Tilt Steering Wheel
- ◆ Dash Fans
- ◆ Cab Light
- ◆ Reclining/Swivel Leatherette Captain's Chairs with Stow-Away Coffee Table
- ◆ Power Adjustable Driver's Seat
- ◆ Emergency Engine Start Switch
- ◆ Power Roller Shade on Windshield
- ◆ Manual Roller Shades on Side Windows
- ◆ 22.5" Tires with Aluminum Wheels

- ◆ Valve Stem Extenders on Rear Wheels
- ◆ Dash Workstation with 110-volt & 12-volt Outlets
- ◆ Power Drop-Down Hide-Away Overhead Bunk with Cotton Cloud™ Mattress & Bunk Ladder

INTERIOR

- ◆ Rubber Tread Entry Steps with Lighted Step Well
- ◆ Residential Vinyl Flooring
- ◆ 84" Interior Ceiling Height
- ◆ Soft Vinyl Ceiling
- ◆ LED Lighting
- ◆ Ceiling Ducted Air Conditioning System
- ◆ High-Gloss Glazed Cabinetry with Solid Wood Flat Panel Cabinet Doors & Nickel Finish Hardware
- ◆ Full Extension Metal Ball-Bearing Metal Drawer Guides
- ◆ Leatherette Dream Dinette® Booth with Cup Holders
- ◆ Leatherette Inclining Theater Seating with Footrests (35.2)
- ◆ Leatherette Sofa Bed (32.2, 35.2 & 37.1)
- ◆ Lambrequin Window Treatments
- ◆ Window Privacy Roller Shades

INTERIOR OPTIONS

- ◆ Leatherette Inclining Theater Seating with Footrests (32.2, 35.4 & 37.1)
- ◆ Electric Fireplace with Remote Control (35.4 & 37.1)

KITCHEN

- ◆ 11 cu. ft. Residential Refrigerator with Ice Maker
- ◆ 2-Burner High-Output Gas Range Top with Single Induction Cooktop
- ◆ 30" Over-the-Range Convection Microwave Oven
- ◆ Solid Surface Sink Covers & Kitchen Countertops
- ◆ Stainless Steel Double Bowl Sink & Single Handle Faucet with Pull Down Sprayer
- ◆ Pantry
- ◆ 12-volt Attic Fan with Cover

BEDROOM & BATHROOM

- ◆ King Size Bed (32.2)
- ◆ King Size Bed with Tilt-A-View® Inclining Bed Mechanism (35.2, 35.4 & 37.1)
- ◆ Bedroom 110-volt Outlet on Inverter for CPAP Machine
- ◆ Designer Headboard, Bedspread & Pillow Shams
- ◆ Bunk Beds – Converts to Sofa or Closet (37.1)

- ◆ Foot Flush Porcelain Toilet
- ◆ Power Vent with Cover in Bathroom
- ◆ Stainless Steel Bathroom Sink
- ◆ Skylight in Shower
- ◆ Shower with Glass Door

ENTERTAINMENT

- ◆ Retractable 49" TV in Living Area (35.2)
- ◆ 40" TV in Living Area (32.2 & 35.2)
- ◆ 40" TV on Always-in-View™ TV Slide System with Side-Hinging Feature (35.4 & 37.1)
- ◆ Blu-Ray Player in Living Area
- ◆ 32" TV in Bedroom
- ◆ 15.5" & 24" TVs & DVD Player in Bunk Beds (37.1)
- ◆ USB Charging Ports - Bedroom & Living Area
- ◆ Cable TV Ready
- ◆ Digital TV Antenna
- ◆ HDMI Video Distribution
- ◆ Exterior 40" TV on Manual Swivel with Bluetooth® Soundbar
- ◆ Winegard® Connect™ 2.0 WiFi / 4G / TV Antenna

ELECTRICAL & PLUMBING

- ◆ Onan® RV QG 5500 Gas Generator

- ◆ 50-amp Shoreline Power Cord
- ◆ Automatic Generator Start
- ◆ 1800-watt Inverter
- ◆ Dual Auxiliary House Batteries with Battery Tray that Holds up to (4) Four Batteries
- ◆ Rapid Camp+® Multiplex Wiring Control System with 7" Touchscreen
- ◆ Solar Prep - Includes Solar Controller
- ◆ Battery Disconnect Switch
- ◆ Dual 13,500 BTU Roof Air Conditioners
- ◆ Exterior LP Connection
- ◆ Tankless Water Heater
- ◆ Water Heater Bypass System
- ◆ Enclosed & Heated Holding Tanks
- ◆ Black Tank Flush System
- ◆ Stackable Washer/Dryer Prep (32.2, 35.2 & 35.4)
- ◆ Washer/Dryer Combo Prep (37.1)
- ◆ Outside Shower
- ◆ 360° Siphon® RV Holding Tank Vent Cap

For a complete listing of available features, visit thormotorcoach.com/miramar.





Made to fit.

IMPORTANT—PLEASE READ: This brochure reflects product design, fabrication, material, components and specifications at the date of printing, which date is disclosed below. Please visit us online at ThorMotorCoach.com or consult with your selling dealership for the latest in standards, options, specification and technical information. Photographs in the brochure may depict optional equipment or may only be available in certain floor plans. Components, appliances and the chassis may have been manufactured in a calendar year before the vehicle's designated model year. All capacities are approximate. The actual length of the vehicle may differ from that indicated in the brochure due to variances in the manufacturing processes and/or installed components. All dry weights are based on standard model features and do not include optional features or equipment. Component part and appliance manufacturers issue limited warranties covering portions of the vehicle not covered under the limited warranty we issue. Copyright Thor Motor Coach, Inc. © OH 10/01/19



thormotorcoach.com/miramar
P.O. Box 1486, Elkhart, IN 46515 Sales Department: 800.860.5658 Customer Service: 877.855.2867